

SHREWSBURY INTERNATIONAL SCHOOL

HONG KONG

Policy Title:	Structure of Governance
Policy Section:	B: Governance, Leadership and Ownership
Publish to:	Website Parent Portal Staff Portal Policy Compendium

Introduction

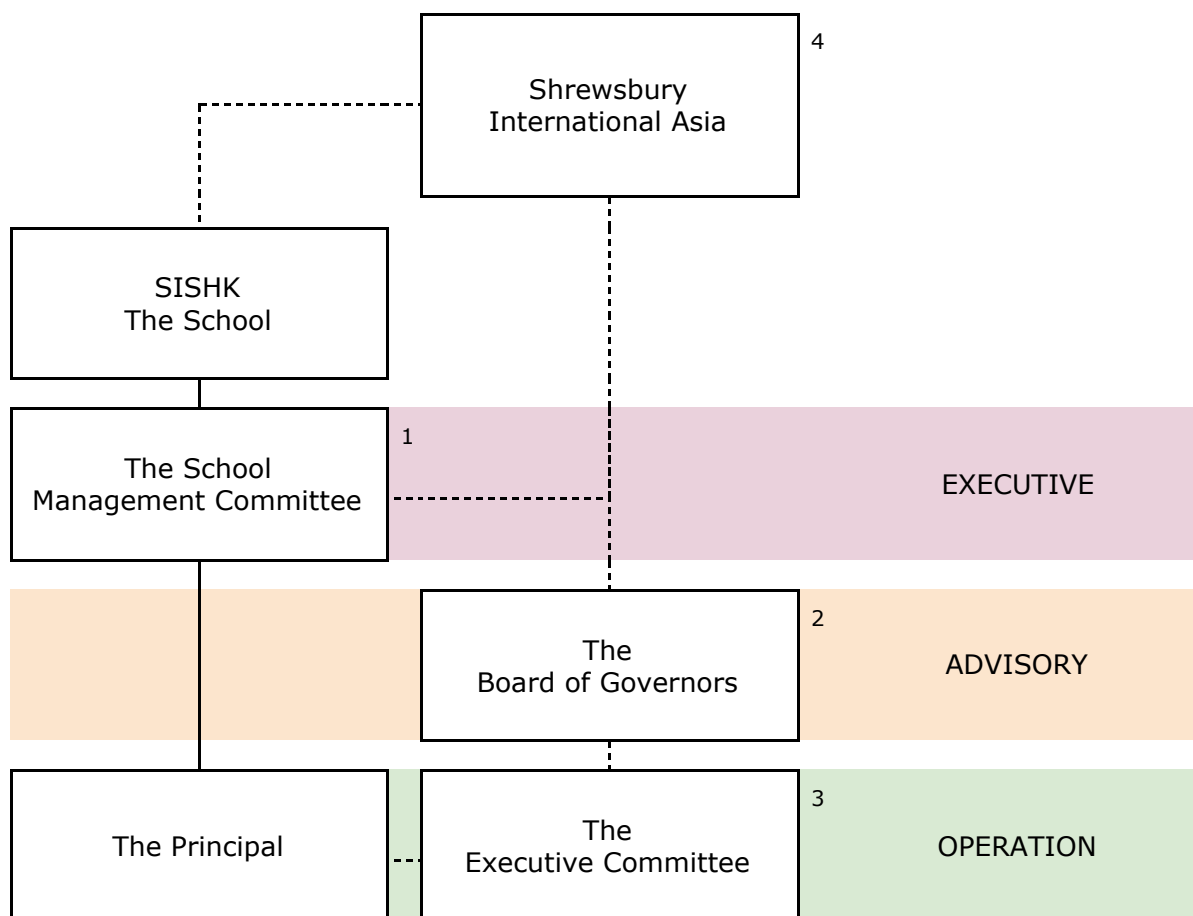
Shrewsbury International School Hong Kong is registered under Section 13 of the Education Ordinance (Cap. 279) and as a not-for-profit organisation under Section 88 of the Inland Revenue Ordinance.

It enjoys a structure of governance that has been designed to provide an appropriate level of local autonomy and ready access to a broad range of advice, knowledge and experience.

The Shrewsbury Family of Schools

Shrewsbury International School Limited benefits from a close relationship with its illustrious sibling thanks to the relationship it shares with Shrewsbury International Asia, a company established in 2018 to support the setup and operation of the schools in Asia bearing the Shrewsbury Name.

Governance Structure



1. The School Management Committee (SMC) is responsible for ensuring that The School operates in full compliance with the Education Ordinance.
2. The Board of Governors is an advisory body made up of local and international members. It is independently chaired and contains two representatives from Shrewsbury School in the UK. It meets on a termly basis and provides advice to The School Management Committee, The Executive Committee and The School Principal on The Framework of Governance. It operates to a set of Rules established in 2017.
3. The Executive Committee ensures that The Principal is able to make decisions quickly and effectively to support the safe and agile operation of The School. It meets on a monthly basis and acts to support and advise The Principal and The

School Management Committee on a broad range of operational and managerial items including:

- 3.1. Finance and budgeting;
 - 3.2. Collection of Fees;
 - 3.3. Enrollment and Admissions;
 - 3.4. Health and Safety;
 - 3.5. Child Protection & Safeguarding;
 - 3.6. Staffing and Headcount.
4. Shrewsbury International Asia provides a range of advisory services. Its Director of Schools and Chief Financial Officer attend meetings with The Board of Governors, as ex-officio members, and the Executive Committee. It also advises on a broad range of strategic items including:
- 4.1. Policy;
 - 4.2. Principals' training and performance management;
 - 4.3. Operational management;
 - 4.4. Financial matters.